



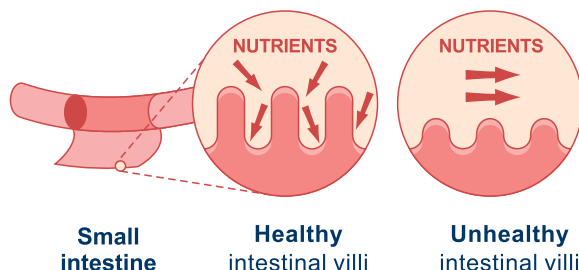
InduceAcid-Buty

Bringing Great Gut Health

InduceAcid-Buty contains 30% sodium butyrate, which is committed to maintaining the gut health and improving growth performance. In addition, it can repair intestinal injury caused by coccidiosis, stress and enteritis.

Functions of Butyrate:

- 1 • Energy (ATP) for colonocytes
- 2 • Improve tight junction and intestinal barrier function
- 3 • Pathogen control
- 4 • Improve immunity



Induce acid-Buty is developed by CP BIO with unique Emulsification and Inclusion technology to achieve a sustained release and better effect.

InduceAcid[®]-Buty



KEY FEATURES OF INDUCEACID-BUTY

<p>A - Advantages</p>	<p>Unique inclusion technology Effect validation by continuous animal trials</p>	<p>B - Benefits</p>	<p>Promote growth performance and intestinal health Increase feed return</p>
<p>F - Features</p>	<p>Targets in the whole gut (sustained release) Thermal-stable Mixability (compatible with feed) No unpleasant smell</p>	<p>V - Added value</p>	<p>FAMIQS/(FDA/APVMA/EU/Russia)-GMP/ISO9001/ISO14001/ISO17025 (Lab)/ISO18001(OHSAS)... Global experience in feed and food production/Technical support and services</p>

Research institution / Site	Animal species / Number	Result
Hyderabad, India	5,000	FCR -0.5 Mortality -1.6 % Weight gain +50 g Alternative of AGP
Guizhou University	423	FCR -0.2 Intestinal villi +5 % -10 % Weight gain +160 g E.coli -20 %
Layer farm in Henan	8,000	Egg production rate +4.2 % Haugh unit +3.62 Average Egg Weight +0.76 g Intestinal villi +8 %-19 % Shell thickness +0.88 μm
Pig farm of CP group in Inner Mongolia	1,440	Body weight +1110 g ROF +32.3
Thailand	60	Average milk production +25.33 % (summer) +40.72 % (cold season)
Yancheng, Zhejiang	112,000	Weight/pond +23 kg Survival rate +1.1 %

InduceAcid-Buty as alternate to AGP in broiler diet.

Source
Sri Ramadhootha Poultry Research farm Pvt. Ltd., Hyderabad



Table 4. Performance of broiler chicken fed sodium butyrate as an alternative to AGP (BMD)

Treat	5 wk (28.04.21 to 01.06.21)			6 wk (28.04.21 to 08.06.21)		
	BWG, g	FI, g	FI/BWG	BWG, g	FI, g	FI/BWG
PC	1975	2947	1.492 ^B	2459	3895	1.584 ^B
NC	1970	2964	1.504 ^A	2448	3930	1.606 ^A
NaB 250	2011	2964	1.474 ^C	2492	3900	1.565 ^C
NaB 500	2017	2966	1.471 ^C	2497	3900	1.562 ^C
P	0.194	0.954	0.000	0.287	0.878	0.000
N	10	10	10	10	10	10
SEM	9.634	12.97	0.003	10.80	16.60	0.003

BWG body weight gain; FI fed intake; PC positive control (with BMD), NC negative control (without BMD), NaB sodium butyrate (250g and 500g/T feed); P probability; N number of replications; SEM standard error mean
^{ABC} means having common superscript in a column did not differ (P<0.05).

Direction for use		0.3-0.8 kg/ton of feed	
	0.5-1.5 kg/ton of feed		1.0-2.0 kg/ton of feed
	0.5-1.0 kg/ton of feed		0.5-2.0 kg/ton of feed